

Existing overland waterway with adjoining drainage culvert.
 Opportunity for water improvement, to provide Water Sensitive Urban Design (WSUD) principals eg. Soft engineered constructed wetland with layered native vegetation to reduce runoff, improve aesthetics and capture nutrients. (Refer Transport NSW WSUD Guidelines).
 Safety considerations include fencing, balustrading or bollards as required - to Council/Government guidelines. Weed management and revegetation with site appropriate endemic species.

Proposed planted Detention Basin for water management with 20m buffer to n/west, to Engineers details. Refer Architecturals.
 Layered native planting in accordance with council requirements and WSUD Guidelines. Example mixed native grasses (slope and basin); *Lomandra hystrix*, *Zoysia macrantha*, *Lomandra floricollis*, *Pennisetum alopecuroides*. Top of basin & upper slope eg. *Westringia fruticosa* 'Mundi' and 'Grey Box'.
 Fencing and/or balustrades as required for safety and to restrict public access. Gated for maintenance access.

Steps with ramp between to provide pedestrian access to community centre. Terraced gardens with sandstone retaining walls (to future detail). Refer detail plan.

Screen hedge planting to n/eastern and s/western boundaries to soften fencelines and provide privacy between tourist park lots and neighbouring properties.
 Eg. *Murraya paniculata* (Sweet Jessamine).

Opportunity for native street trees planted in grassed verges to provide shade and soften the visual impact of future building lines. Tree species and verge placement to Council/NATSPEC specifications.

Permeable paving road treatments at junctions, located at road intersections - for visual interest and to aide in speed abatement.

Feature deciduous trees at 'nodes' to provide visual impact and create a streetscape identity. All street trees to Council and NATSPEC specifications with cleared trunks to allow for sight lines throughout.

INDICATIVE IMAGES
HARDSTAND TREATMENTS

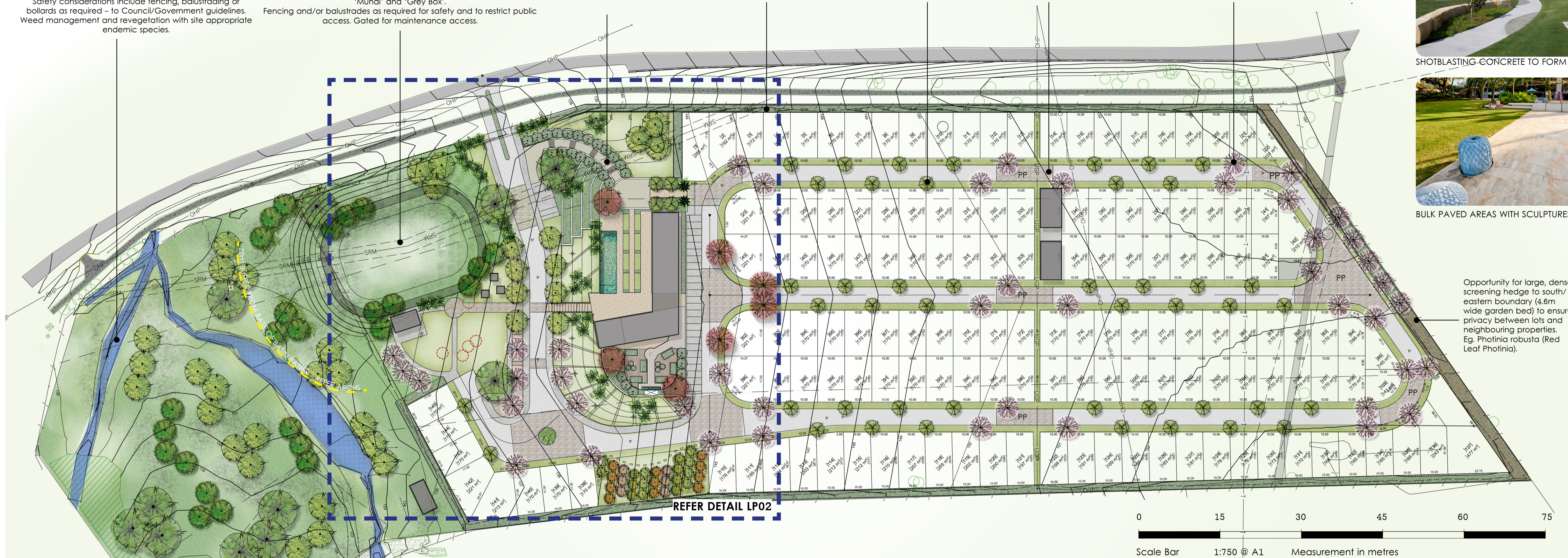


SHOTBLASTING CONCRETE TO FORM PATTERN



BULK PAVED AREAS WITH SCULPTURES EXAMPLE

Opportunity for large, dense screening hedge to south/eastern boundary (4.6m wide garden bed) to ensure privacy between lots and neighbouring properties. Eg. *Photinia robusta* (Red Leaf Photinia).



GENERAL NOTES
COUNCIL APPROVAL/CERTIFICATION IS REQUIRED PRIOR TO THE COMMENCEMENT OF ANY WORKS.
 Refer plans/reports by Surveyors, Architects, Arborists, Ecologists, Engineers and any other relevant consultants for working drawings and site requirements. Information on EcoResolve plans is conceptual and for reference & co-ordination only.
 These drawings are FOR DA SUBMISSION - for Ballina Shire Council Approval. For construction documentation, it is recommended that EcoResolve be engaged (post council approvals) to produce the required construction documentation to be read in conjunction with prepared specifications & details. Landscape plans are copyright to EcoResolve Pty Ltd.

- LEGEND**
 Softscape/Hardstand Treatments
- Mixed canopy large/medium trees (Deciduous and Native)
 - General garden
 - Lawn
 - Stabilised Decomposed Granite
 - Large Format Gravel (20-40mm)
 - Large Format Pavers
 - Plain concrete with sandblasted patterns
 - Permeable Paving (road nodes)
 - Trees to be removed, to Council Approval. (Refer Ecology Report for species details)



INDICATIVE IMAGES
 SHELTERS, BBQ AREAS AND SEATING

LANDSCAPE MASTERPLAN LP01

Project
 LANDSCAPE MASTERPLAN FOR DA PROPOSED TOURIST PARK
 LISMORE ROAD, ALSTONVILLE
 LOT 10 DP1059499

Client
 David Hughes
Council
 Ballina Shire Council
Drawing No. ER182 REV A

Architect
 Herd Pty Ltd
 Dwg No. 23547DWG02
Project Manager
 Barker Ryan Stewart

Rev	Date	Description	Drawn	Check
A	18.08.23	Concept for client review	AB	AB
B	30.08.23	Amendments	AB	AB
C	13.03.24	For Council submission	AB	AB

Scale
 1/750 @ A1
 1/1500 @ A3



Drawn by:
 Amy Bishop BLARCH
 ACN 648 052 653
 EcoResolve
 0426221146
 amy@ecorevolve.com.au

